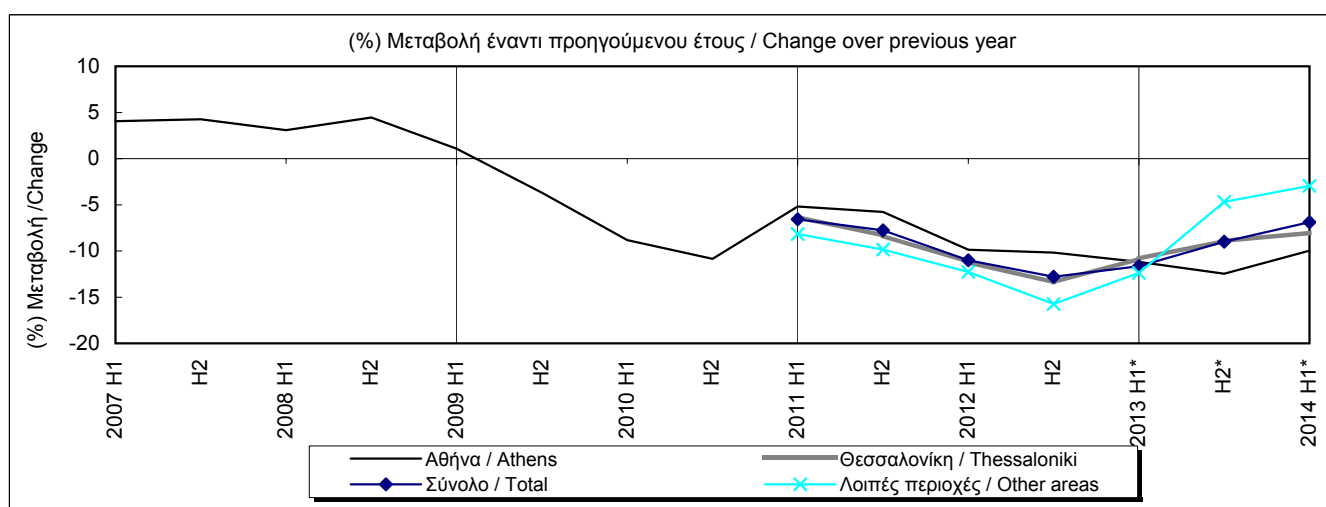


Πίνακας 1. ΔΕΙΚΤΗΣ ΤΙΜΩΝ ΓΡΑΦΕΙΩΝ  
Table 1. OFFICE PRICE INDEX

Περίοδος Period	Σύνολο Total			Αθήνα Athens			Θεσσαλονίκη Thessaloniki			Υπόλοιπη Ελλάδα Rest of Greece		
	Δείκτης Index 2010=100	(% Μεταβολή / Change)		Δείκτης Index 2010=100	(% Μεταβολή / Change)		Δείκτης Index 2010=100	(% Μεταβολή / Change)		Δείκτης Index 2010=100	(% Μεταβολή / Change)	
		Προηγούμεν. περίοδου Previous period	Προηγούμεν. έτους Previous year		Προηγούμεν. περίοδου Previous period	Προηγούμεν. έτους Previous year		Προηγούμεν. περίοδου Previous period	Προηγούμεν. έτους Previous year		Προηγούμεν. περίοδου Previous period	Προηγούμεν. έτους Previous year
2006	...	...	...	104.0	...	...	...	...	...	...	...	...
2007	...	...	...	108.3	4.2	4.2	...	...	...	...	...	...
2008	...	...	...	112.4	3.8	3.8	...	...	...	...	...	...
2009	...	...	...	110.9	-1.3	-1.3	...	...	...	...	...	...
2010	100.0	...	...	100.0	-9.8	-9.8	100.0	...	...	100.0	...	...
2011	92.9	-7.1	-7.1	94.5	-5.5	-5.5	92.7	-7.3	-7.3	91.0	-9.0	-9.0
2012	81.8	-11.9	-11.9	85.1	-10.0	-10.0	81.3	-12.3	-12.3	78.3	-14.0	-14.0
2013*	73.3	-10.4	-10.4	75.0	-11.8	-11.8	73.3	-9.9	-9.9	71.5	-8.7	-8.7
2006	H1	...	...	103.3	...	...	...	...	...	...	...	...
	H2	...	...	104.6	1.2	...	...	...	...	...	...	...
2007	H1	...	...	107.5	2.8	4.1	...	...	...	...	...	...
	H2	...	...	109.1	1.4	4.3	...	...	...	...	...	...
2008	H1	...	...	110.9	1.6	3.1	...	...	...	...	...	...
	H2	...	...	114.0	2.8	4.5	...	...	...	...	...	...
2009	H1	...	...	112.0	-1.7	1.1	...	...	...	...	...	...
	H2	...	...	109.8	-2.0	-3.7	...	...	...	...	...	...
2010	H1	102.1	...	102.2	-6.9	-8.8	102.0	...	...	102.0	...	...
	H2	97.9	-4.1	97.8	-4.2	-10.8	98.0	-4.0	...	98.0	-4.0	...
2011	H1	95.4	-2.6	96.9	-1.0	-5.2	95.6	-2.4	-6.3	93.7	-4.4	-8.2
	H2	90.3	-5.3	92.2	-4.8	-5.8	89.8	-6.1	-8.3	88.3	-5.7	-9.8
2012	H1	84.9	-6.0	87.3	-5.3	-9.9	84.9	-5.5	-11.2	82.2	-6.9	-12.3
	H2	78.8	-7.2	82.8	-5.1	-10.2	77.8	-8.4	-13.4	74.4	-9.5	-15.7
2013	H1*	75.0	-4.8	77.5	-6.4	-11.2	75.7	-2.7	-10.8	72.0	-3.2	-12.4
	H2*	71.7	-4.4	72.5	-6.5	-12.5	70.8	-6.4	-8.9	70.9	-1.5	-4.7
2014	H1*	69.8	-2.6	69.8	-3.7	-10.0	69.6	-1.7	-8.0	69.9	-1.4	-2.9

Πηγή: Τράπεζα της Ελλάδος / Source: Bank of Greece

\*Προσωρινά στοιχεία. / Provisional data.

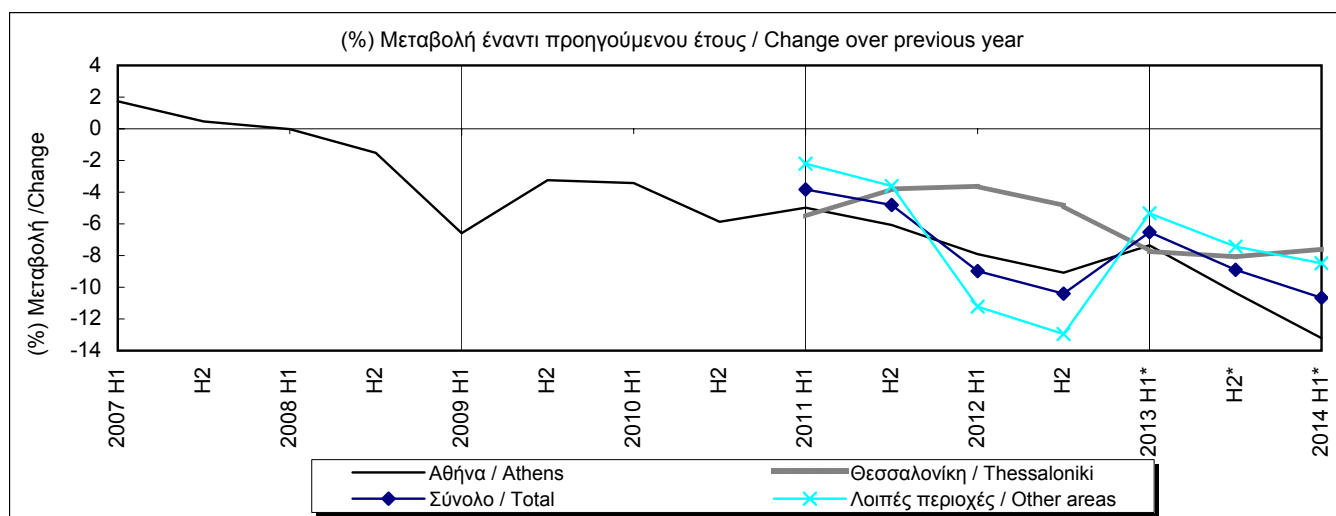


Πίνακας 2. ΔΕΙΚΤΗΣ ΜΙΣΘΩΜΑΤΩΝ ΓΡΑΦΕΙΩΝ  
Table 2. OFFICE RENT INDEX

Περίοδος Period	Σύνολο Total			Αθήνα Athens			Θεσσαλονίκη Thessaloniki			Υπόλοιπη Ελλάδα Rest of Greece		
	Δείκτης Index 2010=100	(% ) Μεταβολή / Change		Δείκτης Index 2010=100	(% ) Μεταβολή / Change		Δείκτης Index 2010=100	(% ) Μεταβολή / Change		Δείκτης Index 2010=100	(% ) Μεταβολή / Change	
		Προηγούμεν. περιόδου Previous period	Προηγούμεν. έτους Previous year		Προηγούμεν. περιόδου Previous period	Προηγούμεν. έτους Previous year		Προηγούμεν. περιόδου Previous period	Προηγούμεν. έτους Previous year		Προηγούμεν. περιόδου Previous period	Προηγούμεν. έτους Previous year
2006	...	...	...	110.0	...	...	...	...	...	...	...	...
2007	...	...	...	111.2	1.1	1.1	...	...	...	...	...	...
2008	...	...	...	110.3	-0.8	-0.8	...	...	...	...	...	...
2009	...	...	...	104.9	-4.9	-4.9	...	...	...	...	...	...
2010	100.0	...	...	100.0	-4.6	-4.6	100.0	...	...	100.0	...	...
2011	95.7	-4.3	-4.3	94.5	-5.5	-5.5	95.3	-4.7	-4.7	97.1	-2.9	-2.9
2012	86.4	-9.7	-9.7	86.5	-8.5	-8.5	91.3	-4.2	-4.2	85.4	-12.1	-12.1
2013 *	79.8	-7.7	-7.7	78.8	-8.8	-8.8	84.1	-7.9	-7.9	79.9	-6.4	-6.4
2006	H1	...	...	110.0	...	...	...	...	...	...	...	...
	H2	...	...	109.9	-0.1	...	...	...	...	...	...	...
2007	H1	...	...	111.9	1.8	1.7	...	...	...	...	...	...
	H2	...	...	110.4	-1.3	0.5	...	...	...	...	...	...
2008	H1	...	...	111.9	1.3	0.0	...	...	...	...	...	...
	H2	...	...	108.8	-2.8	-1.5	...	...	...	...	...	...
2009	H1	...	...	104.5	-3.9	-6.6	...	...	...	...	...	...
	H2	...	...	105.2	0.7	-3.2	...	...	...	...	...	...
2010	H1	100.8	...	100.9	-4.1	-3.4	101.7	...	...	100.5	...	...
	H2	99.2	-1.6	99.1	-1.8	-5.9	98.3	-3.3	...	99.5	-1.0	...
2011	H1	96.9	-2.3	95.9	-3.2	-5.0	96.0	-2.4	-5.5	98.3	-1.3	-2.2
	H2	94.4	-2.6	93.1	-3.0	-6.1	94.6	-1.5	-3.8	95.9	-2.4	-3.6
2012	H1	88.2	-6.6	88.3	-5.1	-7.9	92.6	-2.2	-3.6	87.2	-9.1	-11.2
	H2	84.6	-4.1	84.6	-4.2	-9.1	90.0	-2.7	-4.9	83.5	-4.3	-12.9
2013	H1*	82.5	-2.5	81.8	-3.3	-7.4	85.4	-5.1	-7.7	82.6	-1.1	-5.3
	H2*	77.1	-6.5	75.8	-7.3	-10.4	82.7	-3.1	-8.1	77.3	-6.4	-7.4
2014	H1*	73.7	-4.4	71.0	-6.4	-13.2	78.9	-4.6	-7.6	75.6	-2.2	-8.5

Πηγή: Τράπεζα της Ελλάδος/ Source: Bank of Greece

\*Προσωρινά στοιχεία. / Provisional data.



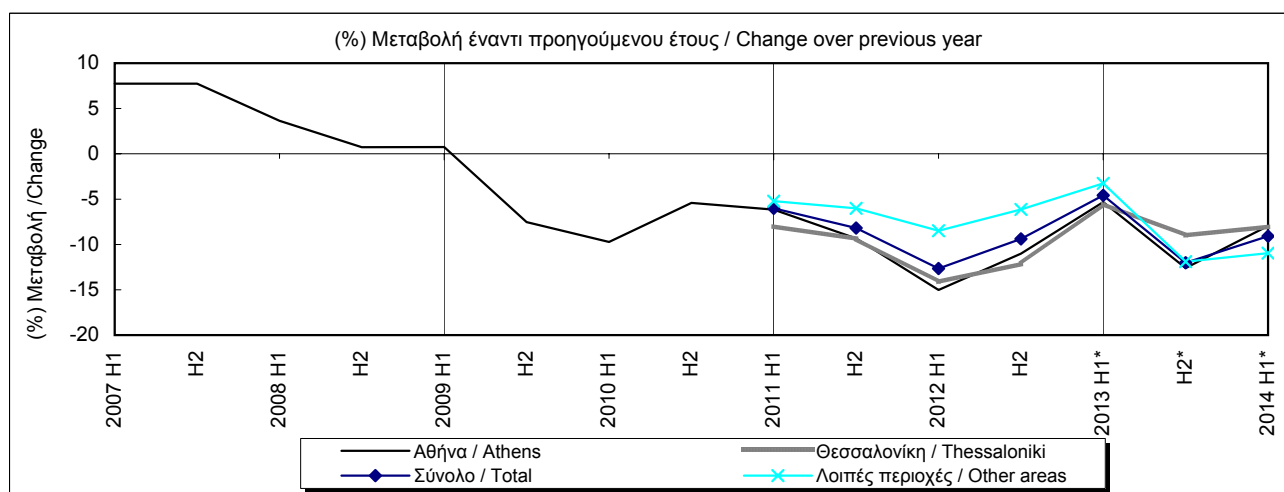
Πίνακας 3. ΔΕΙΚΤΗΣ ΤΙΜΩΝ ΚΑΤΑΣΤΗΜΑΤΩΝ

Table 3. RETAIL PRICE INDEX

Περίοδος Period	Σύνολο Total			Αθήνα Athens			Θεσσαλονίκη Thessaloniki			Υπόλοιπη Ελλάδα Rest of Greece		
	Δείκτης Index 2010=100	(% Μεταβολή / Change)		Δείκτης Index 2010=100	(% Μεταβολή / Change)		Δείκτης Index 2010=100	(% Μεταβολή / Change)		Δείκτης Index 2010=100	(% Μεταβολή / Change)	
		Προηγούμεν. περίοδου Previous period	Προηγούμεν. έτους Previous year		Προηγούμεν. περίοδου Previous period	Προηγούμεν. έτους Previous year		Προηγούμεν. περίοδου Previous period	Προηγούμεν. έτους Previous year		Προηγούμεν. περίοδου Previous period	Προηγούμεν. έτους Previous year
2006	...	...	...	101.9	...	...	...	...	...	...	...	...
2007	...	...	...	109.7	7.7	7.7	...	...	...	...	...	...
2008	...	...	...	112.1	2.2	2.2	...	...	...	...	...	...
2009	...	...	...	108.3	-3.4	-3.4	...	...	...	...	...	...
2010	100.0	...	...	100.0	-7.7	-7.7	100.0	...	...	100.0	...	...
2011	92.9	-7.1	-7.1	92.3	-7.7	-7.7	91.3	-8.7	-8.7	94.4	-5.6	-5.6
2012	82.6	-11.1	-11.1	80.2	-13.1	-13.1	79.3	-13.2	-13.2	87.5	-7.3	-7.3
2013*	75.8	-8.3	-8.3	73.0	-8.9	-8.9	73.6	-7.2	-7.2	80.9	-7.5	-7.5
2006	H1	...	...	100.0	...	...	...	...	...	...	...	...
	H2	...	...	103.7	3.7	...	...	...	...	...	...	...
2007	H1	...	...	107.7	3.8	7.7	...	...	...	...	...	...
	H2	...	...	111.8	3.7	7.7	...	...	...	...	...	...
2008	H1	...	...	111.7	-0.1	3.6	...	...	...	...	...	...
	H2	...	...	112.6	0.8	0.7	...	...	...	...	...	...
2009	H1	...	...	112.5	-0.1	0.7	...	...	...	...	...	...
	H2	...	...	104.1	-7.5	-7.5	...	...	...	...	...	...
2010	H1	101.6	...	101.5	-2.5	-9.7	102.3	...	...	101.6	...	...
	H2	98.4	-3.2	98.5	-3.0	-5.4	97.7	-4.4	...	98.4	-3.2	...
2011	H1	95.5	-2.9	95.3	-3.2	-6.2	94.1	-3.7	-8.0	96.3	-2.1	-5.2
	H2	90.3	-5.5	89.3	-6.3	-9.3	88.6	-5.9	-9.4	92.5	-4.0	-6.0
2012	H1	83.4	-7.6	81.0	-9.3	-15.0	80.8	-8.8	-14.1	88.1	-4.7	-8.5
	H2	81.8	-1.9	79.4	-1.9	-11.0	77.8	-3.7	-12.1	86.8	-1.5	-6.1
2013	H1*	79.6	-2.7	76.7	-3.5	-5.3	76.3	-1.9	-5.5	85.3	-1.8	-3.3
	H2*	72.0	-9.5	69.4	-9.4	-12.6	70.8	-7.2	-9.0	76.5	-10.3	-11.9
2014	H1*	72.4	0.5	70.6	1.6	-8.0	70.2	-0.9	-8.1	75.9	-0.7	-11.0

Πηγή: Τράπεζα της Ελλάδος/ Source: Bank of Greece

\*Προσωρινά στοιχεία. / Provisional data.



Πίνακας 4. ΔΕΙΚΤΗΣ ΜΙΣΘΩΜΑΤΩΝ ΚΑΤΑΣΤΗΜΑΤΩΝ  
Table 4. RETAIL RENT INDEX

Περίοδος Period	Σύνολο Total			Αθήνα Athens			Θεσσαλονίκη Thessaloniki			Υπόλοιπη Ελλάδα Rest of Greece		
	Δείκτης Index 2010=100	(% Μεταβολή / Change Προηγούμε. Προηγούμε. περιόδου έτους Previous period year		Δείκτης Index 2010=100	(% Μεταβολή / Change Προηγούμε. Προηγούμε. περιόδου έτους Previous period year		Δείκτης Index 2010=100	(% Μεταβολή / Change Προηγούμε. Προηγούμε. περιόδου έτους Previous period year		Δείκτης Index 2010=100	(% Μεταβολή / Change Προηγούμε. Προηγούμε. περιόδου έτους Previous period year	
		...	...		...	...		...	...		...	...
2006	...	...	...	117.1	...	...	...	...	...	...	...	...
2007	...	...	...	120.6	2.9	2.9	...	...	...	...	...	...
2008	...	...	...	121.2	0.5	0.5	...	...	...	...	...	...
2009	...	...	...	119.8	-1.2	-1.2	...	...	...	...	...	...
2010	100.0	...	...	100.0	-16.5	-16.5	100.0	...	...	100.0	...	...
2011	92.7	-7.3	-7.3	90.6	-9.4	-9.4	95.0	-5.0	-5.0	95.5	-4.5	-4.5
2012	84.6	-8.7	-8.7	84.3	-7.1	-7.1	85.2	-10.3	-10.3	85.1	-10.9	-10.9
2013 *	75.1	-11.3	-11.3	72.6	-13.9	-13.9	78.4	-8.0	-8.0	78.3	-8.0	-8.0
2006	H1	...	...	114.9	...	...	...	...	...	...	...	...
	H2	...	...	119.4	3.9	...	...	...	...	...	...	...
2007	H1	...	...	121.0	1.3	5.3	...	...	...	...	...	...
	H2	...	...	120.2	-0.7	0.7	...	...	...	...	...	...
2008	H1	...	...	120.3	0.1	-0.5	...	...	...	...	...	...
	H2	...	...	122.1	1.5	1.6	...	...	...	...	...	...
2009	H1	...	...	124.5	2.0	3.5	...	...	...	...	...	...
	H2	...	...	115.1	-7.6	-5.7	...	...	...	...	...	...
2010	H1	100.7	...	101.1	-12.1	-18.8	100.4	...	...	100.2	...	...
	H2	99.3	-1.5	...	98.9	-2.3	-14.1	99.6	-0.9	...	99.8	-0.4
2011	H1	94.6	-4.7	-6.1	92.1	-6.8	-8.9	96.4	-3.1	-4.0	97.9	-1.9
	H2	90.9	-3.9	-8.4	89.2	-3.2	-9.8	93.6	-3.0	-6.0	93.0	-5.1
2012	H1	85.5	-5.9	-9.6	85.1	-4.6	-7.7	86.7	-7.3	-10.1	85.9	-7.6
	H2	83.7	-2.1	-7.9	83.4	-1.9	-6.4	83.7	-3.6	-10.6	84.2	-2.0
2013	H1*	76.9	-8.2	-10.1	74.2	-11.1	-12.8	82.1	-1.9	-5.4	79.7	-5.3
	H2*	73.3	-4.6	-12.4	70.9	-4.4	-15.0	74.7	-9.0	-10.7	76.8	-3.7
2014	H1*	69.5	-5.2	-9.5	69.2	-2.5	-6.7	71.5	-4.3	-13.0	69.6	-9.4

Πηγή: Τράπεζα της Ελλάδος / Source: Bank of Greece

\*Προσωρινά στοιχεία. / Provisional data.

